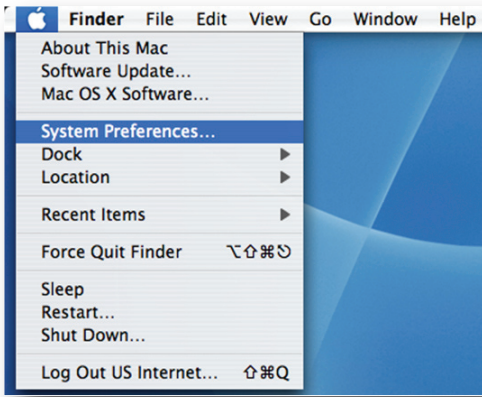
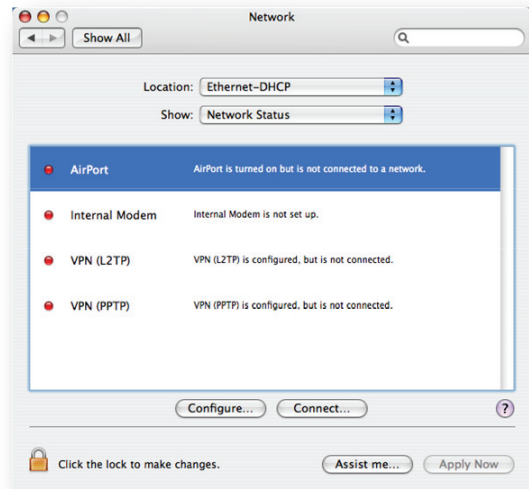


Connecting to USI Wireless With OS X

On the Apple menu, go to System Preferences.



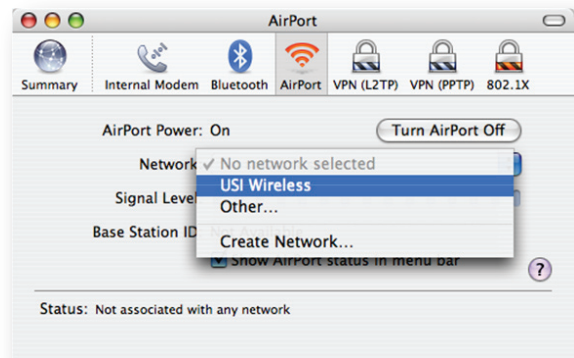
Select AirPort, and Click on Connect.



Click on Network.

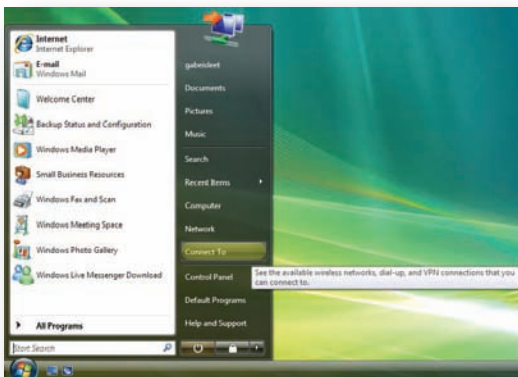


Click on the Network drop-down list in the dialog that appears, and select USI Wireless.

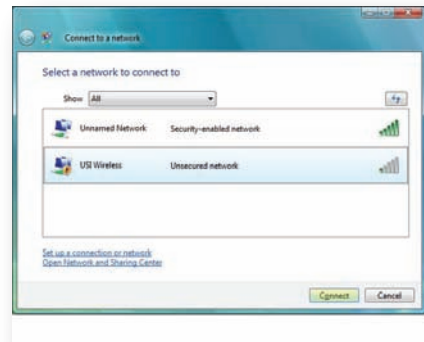


Connecting to USI Wireless With Vista

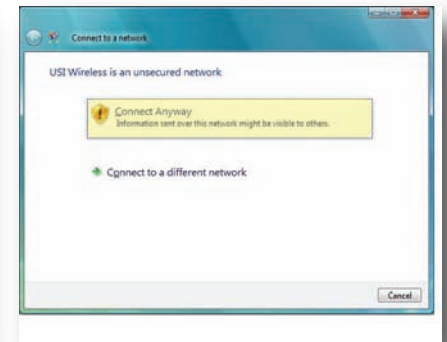
Click Start, then Connect To.



Select USI Wireless, and click Connect.



Click on Connect Anyway.



Your computer should now be connected to the USI Wireless network.

Open your browser and navigate to a web page. You will be redirected to the login page where you can either sign up as a new customer or enter your existing username and password.